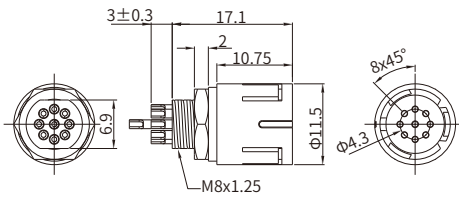
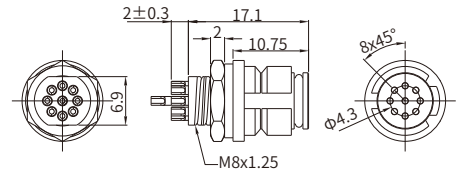


M10 Straight Connector, Panel Mount, Solder Type, Rear Fastened

Male



Female



RoHS

RoHS

Specifications

Contacts	5	9
Pin layout(Male)		
Pin layout(Female)		
Ambient temperature	-15°C~+85°C (flexible installation), -30°C~+85°C (fixed installation)	
Customized temperature	-25°C ~ +85°C (flexible installation), -40°C ~ +85°C (fixed installation)	
Connector insert	PA+GF	
Connector contacts	Brass with gold plated	
Coupling nut/screw	Brass with nickel plated	
O-ring(of Female)	FKM	
Insulation resistance	≥20MΩ	
Contact resistance	≤5mΩ	
Earth tag/pin	Unavailable	
IP rating	IP65 in locked condition	
Mating endurance	>500 cycles	
Rated current	2 A	1 A
Rated voltage	60V AC / 72V DC	30V
Wire gauge	0.14mm ² (AWG26)	

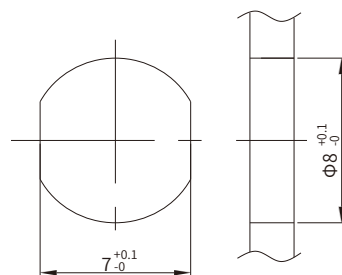
Part Number

Pins	Wire length	Male	Female
5	0.1m	MB10MSARIO5ST-1401	MB10FSARIO5ST-1401
	0.3m	MB10MSARIO5ST-1403	MB10FSARIO5ST-1403
9	0.1m	MB10MSARIO9ST-1401	MB10FSARIO9ST-1401
	0.3m	MB10MSARIO9ST-1403	MB10FSARIO9ST-1403

Default wire colors

Pin No.		
Pin 1	BN	BN
Pin 2	WH	RD
Pin 3	BU	OR
Pin 4	BK	YE
Pin 5	GY	GN
Pin 6		BU
Pin 7		GY
Pin 8		WH
Pin 9		BK

Panel Cut-out Dimensions



Panel cut-out