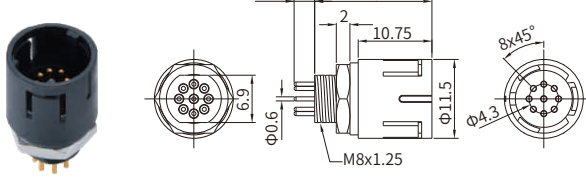


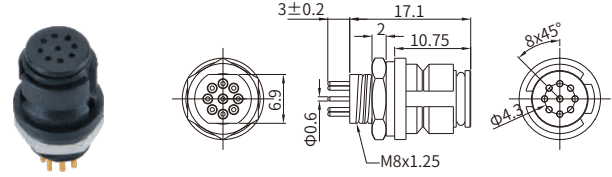
M10

M10 Straight Connector, Panel Mount, PCB Type, Rear Fastened

Male



Female



RoHS

RoHS

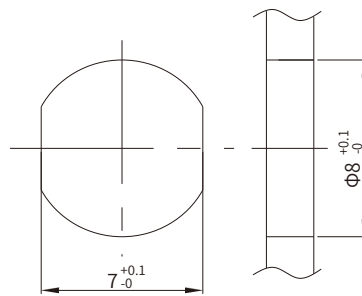
Specifications

Contacts	5	9
Pin layout(Male)		
Pin layout(Female)		
Ambient temperature	-25°C ~ +85°C	
Connector insert	PA+GF	
Connector contacts	Brass with gold plated	
Coupling nut/screw	Brass with nickel plated	
O-ring(of Female)	FKM	
Insulation resistance	≥20MΩ	
Contact resistance	≤5mΩ	
Earth tag/pin	Unavailable	
IP rating	IP65 in locked condition	
Mating endurance	>500 cycles	
Rated current	2 A	1 A
Rated voltage	60V AC / 72V DC	30V

Part Number

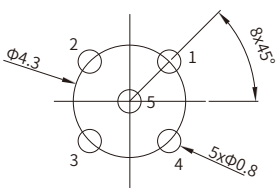
Pins	Male	Female
5	MB10MBARI05ST	MB10FBARI05ST
9	MB10MBARI09ST	MB10FBARI09ST

Panel Cut-out Dimensions

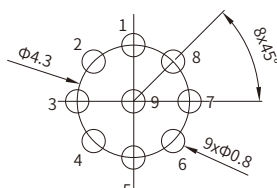


Panel cut-out

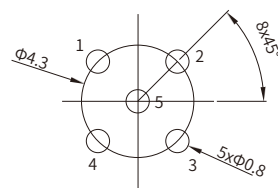
PCB Layout



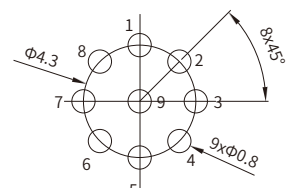
5Pins male



9Pins male



5Pins Female



9Pins Female