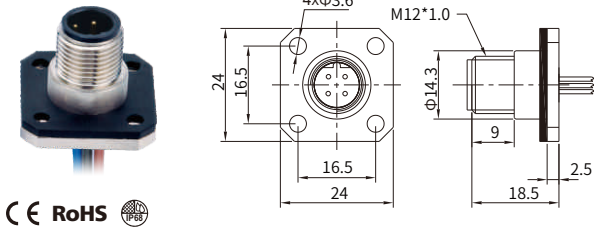


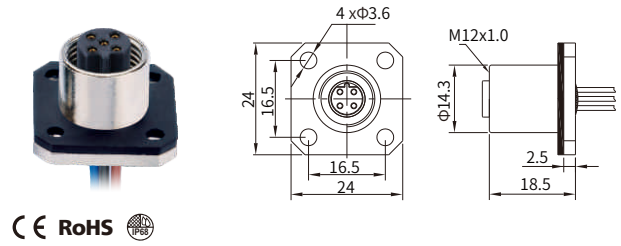
M12 B-coding (Profibus)

M12 B-coding Straight Connector, Panel Mount, Solder, with Flange

Male



Female



Specifications

Contacts	3	4	5
Certification	US CYJV2(CYJV8).E321413		
Pin layout(Male)			
Pin layout(Female)			
Standard	IEC 61076-2-101		
Ambient temperature	-15°C~+85°C (flexible installation), -30°C~+85°C (fixed installation)		
Customized temperature	-25°C ~ +85°C (flexible installation), -40°C ~ +85°C (fixed installation)		
Connector insert	TPU		
Connector contacts	Brass with gold plated		
Coupling nut/screw	Brass with nickel plated		
Seal/O-ring	Epoxy resin / FKM		
Insulation resistance	≥ 100MΩ		
Contact resistance	≤ 5mΩ		
Earth tag/pin	Unavailable		
IP rating	IP67, IP68 in locked condition		
Mating endurance	>500 cycles		
Rated current	4 A		
Rated voltage	250V AC/DC		60V AC/DC
Wire gauge	0.34mm ² (AWG22)		

Part Number

Pins	Cable length	Male	Female
3	0.1m	MB12MSBFLF03ST-3401	MB12FSBFLF03ST-3401
	0.3m	MB12MSBFLF03ST-3403	MB12FSBFLF03ST-3403
4	0.1m	MB12MSBFLF04ST-3401	MB12FSBFLF04ST-3401
	0.3m	MB12MSBFLF04ST-3403	MB12FSBFLF04ST-3403
5	0.1m	MB12MSBFLF05ST-3401	MB12FSBFLF05ST-3401
	0.3m	MB12MSBFLF05ST-3403	MB12FSBFLF05ST-3403

Default wire colors

Pin No.				Profibus
Pin 1	BN	BN	BN	
Pin 2		WH	WH	GN
Pin 3	BU	BU	BU	
Pin 4	BK	BK	BK	RD
Pin 5			GY	