

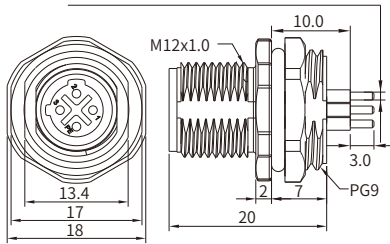
M12 C-coding (Power)



M12 C-coding Straight Connector, Panel Mount, Die-cast Screw, PCB Type, Rear fastened

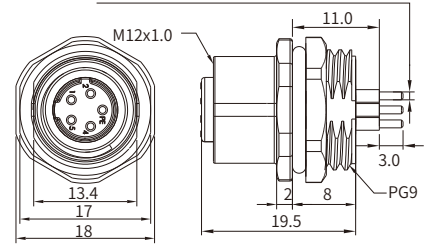
Male

03Pin~04Pin: Φ 1.0; 05Pin~06Pin: Φ 0.8



Female

03Pin~04Pin: Φ 1.0; 05Pin~06Pin: Φ 0.8



Specifications

Contacts	3 (2+PE)	4 (3+PE)	5 (4+PE)	6 (5+PE)
Certification	us CYJV2(CYJV8).E321413			
Pin layout(Male)				
Pin layout(Female)				
Standard	IEC 61076-2-101			
Ambient temperature	-25°C ~ +90°C			
Connector insert	PA			
Connector contacts	Brass with gold plated			
Coupling nut/screw	Zinc alloy with nickel plated			
Seal/O-ring	Epoxy resin / FKM			
Insulation resistance	$\geq 100M\Omega$			
Contact resistance	$\leq 5m\Omega$			
Earth tag/pin	Unavailable			
IP rating	IP67, IP68 in locked condition			
Mating endurance	>500 cycles			
Rated current	4 A		2 A	
Rated voltage	250V AC/DC		60V AC/DC	30V AC/DC
Panel cut-out	Refer to page 384			
PCB layout	Refer to page 383			

Part Number

Pins	Male	Female
	PG9	PG9
3	MB12MBCRHD03ST-3	MB12FBCRHD03ST-3
4	MB12MBCRHD04ST-3	MB12FBCRHD04ST-3
5	MB12MBCRHD05ST-3	MB12FBCRHD05ST-3
6	MB12MBCRHD06ST-3	MB12FBCRHD06ST-3