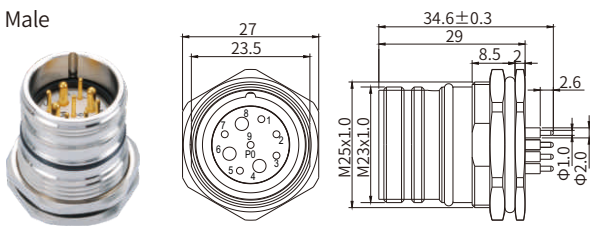
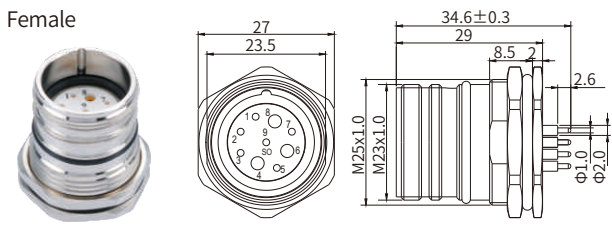


M23 Straight Connector, Panel Mount, PCB, Front fastened, Coupling screw

Male



Female



Specifications

Contacts	6A	7A	9A	9B	9C	12A	12B	16A	17A	17B	19A
Certification	ECBT2(ECBT8).E473386										
Pin layout(Male)											
Pin layout(Female)											
Connector insert	PA										
Connector contacts	Brass with gold plated										
Coupling nut/screw	Brass with nickel plated										
Seal/O-ring	FKM or NBR										
Mating Endurance	>800										
Insulation resistance	≥100MΩ										
Contact resistance	≤5mΩ										
Ambient temperature	-40°C ~ +125°C										
Shielding	Unavailable										
IP rating	IP67, IP68 in locked condition										
Panel cut-out	Refer to page 482										
PCB layout	Refer to page 482										
Number of positions	6,7		9(8+1)/(6+3)				12	16		17	19(16+3)
Contacts	6 / 6		8 / 6		1 / 3		12	16		17	16 / 3
Contact OD(mm)	2.0(14AWG)		1.0(18AWG)		2.0(14AWG)		1.0(18AWG)	1.0(18AWG)		1.0(18AWG)	1.0(18AWG) / 1.5(16AWG)
Rated current @ 20°C(A)	20		8		20		8	8		8	8 / 10
Rated Voltage(V)	300		300		300		300	160		160	160 / 160
Impulse voltage(V)	2500		2500		2500		1500	1500		1500	1500 / 1500
Overvoltage category	II										
Pollution Degree	III										

Part Number

Pins	Male	Female
6A	M23-SSPPSTFS206A	M23-SSPSSTFS206A
7A	M23-SSPPSTFS207A	M23-SSPSSTFS207A
9A	M23-SSPPSTFS209A	M23-SSPSSTFS209A
9B	M23-SSPPSTFS209B	M23-SSPSSTFS209B
9C	M23-SSPPSTFS209C	M23-SSPSSTFS209C
12A	M23-SSPPSTFS212A	M23-SSPSSTFS212A
12B	M23-SSPPSTFS212B	M23-SSPSSTFS212B
16A	M23-SSPPSTFS216A	M23-SSPSSTFS216A
17A	M23-SSPPSTFS217A	M23-SSPSSTFS217A
17B	M23-SSPPSTFS217B	M23-SSPSSTFS217B
19A	M23-SSPPSTFS219A	M23-SSPSSTFS219A